

Clarity PayTrace Payment Hub

PayTrace Integrations for all ERPs & CRMs

CLARITY



Helping You Save Thousands Right Now

Clarity PayTrace Payment Hub

Clarity has been in the business of eCommerce and integration for more than 15 years, delivering over 1,300 sites and 3,000 integrations. These integrations are to most eCommerce, CRM, ERP and EMR solutions and provide a unique opportunity to provide almost instant connection and transactional capabilities to any website, CRM or ERP.

Many companies do not immediately capture credit card payments when clients purchase on account, or they order “made-to-order” products that will be shipped in a few days. Companies will typically want to batch capture those order funds at the end of the day, on the day those orders shipped. The issue is that many of the ERPs don’t have a connection to specific payments gateways, in this case PayTrace. PayTrace is especially beneficial for those B2B companies, who can benefit with great savings in being able to process wholesale rates, and qualify for Level III PCI data, which can take transaction costs under two percent.

In order to be able to process not only these, but payments from all sources of transactions (i.e. POS, events, donation forms, online bill pay, etc.), Clarity has built an online payment hub. This hub can “connect” or integrate with any payment source and capture the funds from any orders, bills or invoices that need processing. The portal can also query your ERP to pull any invoices that have been generated and send notifications to your customers that they have an invoice ready for payment. They can then come to the portal to sign up for Express-pay for their orders, as well as individually view, print and pay their invoices.



Features

The Hub is highly customizable, and additional features may be added. Below is the list of out-of-the-box capabilities.

ExpressPay

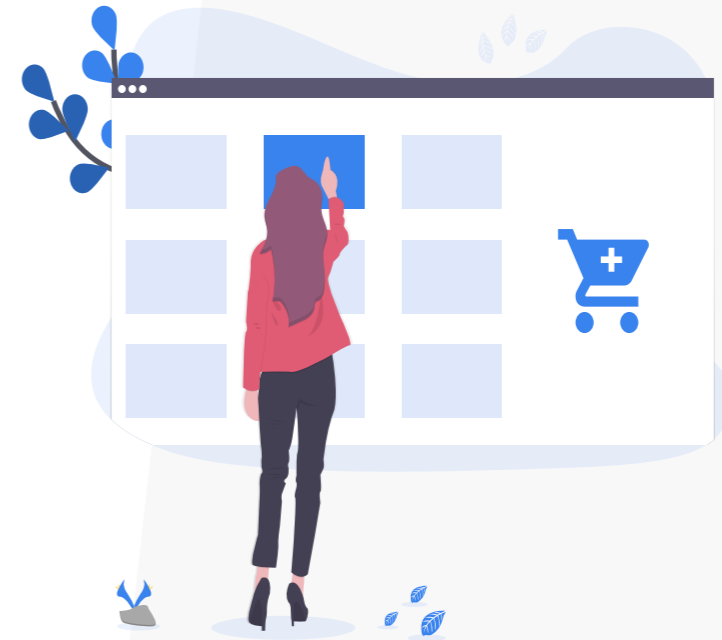
Customers can sign up and register for express pay services (with their card on file, you can capture when their order ships).

Example: The Hub provides a PCI-compliant wallet for secure credit card registration.

Virtual Terminal

The hub has an Admin virtual terminal where your sales reps can manually process any payments.

Example: The Hub provides virtual terminal to process one-off payments.



Invoicing

The Hub can pull customer invoices, providing your customers with the ability to pay their invoices online.

Example: Invoices can be pulled from the ERP and posted in the portal so clients can view, print, and pay their invoices online.

Capture Funds

The Hub can batch capture credit card orders on any schedule.

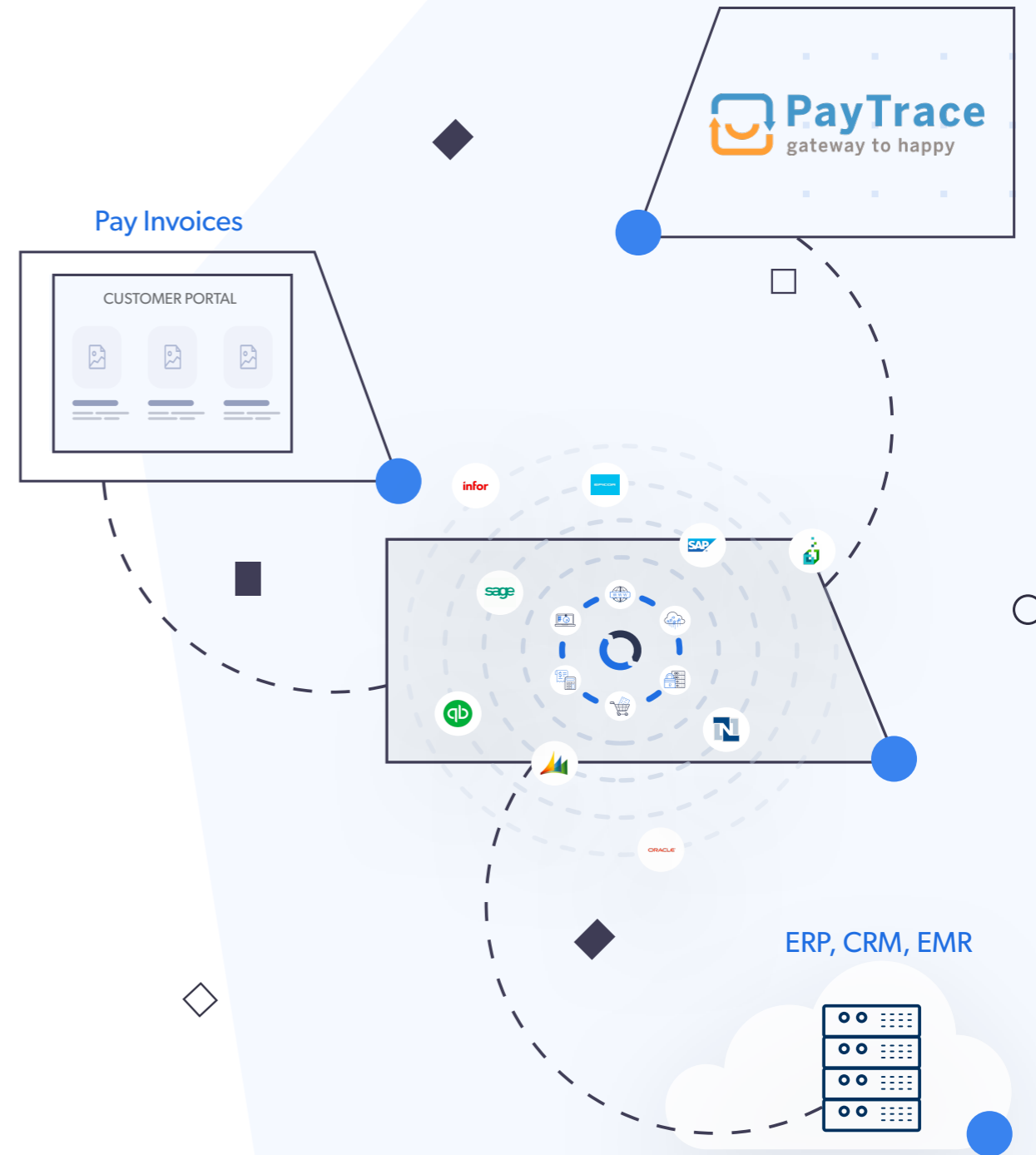
Example: Batch jobs can be automatically pulled from your ERP, or triggered in real-time.

Architecture

The Clarity Payment Hub is typically hosted on the internet or behind a client's firewall, depending on security and whether the ERP is on-premises or cloud based.

Clarity Connect™ and Clarity eCommerce™ modules are at the core of the solution. This allows Clarity to “borrow” any of the connectors to the hundreds of applications that we've integrated. This means that you can add a connection to a POS system, an inventory or warehouse management system and so on.

The portal provides a PCI DSS compliant interface (wallet) for your customers to store their credit cards for auto-pay, allowing you to batch process their orders.




What Clarity Provides with PayTrace

ExpressPay Registration

PCI DSS compliance is a merchant account requirement that companies cannot store credit card numbers. In order to process credit card payments, companies integrate with a PCI provider, which verifies the card entered and hands a token back to store, which refers to a specific card for all future purchases. In order for the Hub to automatically batch process orders, the tokens for the cards linked to those orders needs to be on file. Clarity's wallet is PCI compliant, which means when your customers enter their credit card information and hit, "Save," the Hub speaks to the PCI provider and gets a token to store for that card. This means that your company isn't storing credit card data, although it has the token so can automatically batch process orders on your customer's cards when you ship their order.

Signing up for ExpressPay allows your customers to register their credit cards, which stores the token so you can batch process payments for them as soon as their order ships. Without registration, you don't have their card or token on file and will have to manually call them to process any credit card payments.

A woman with long dark hair, wearing a white t-shirt and blue jeans, is pointing at a whiteboard. The whiteboard has several diagrams and handwritten notes. One diagram shows a line graph with the title 'Post-TRIAL' and 'Pay' on the y-axis. Another diagram shows a pie chart with '31' written next to it. There are also some text boxes and arrows on the board.

ExpressPay allows you to batch process your customers payments.

Invoicing

Another benefit of Clarity's long history with integration is the ability to pull invoices generated in your ERP. These invoices can be published in the portal so after the user registers for autopay, they will be able to log in, view, print and pay any of their invoices online. The Hub will process (capture) the funds in real time and post the payments to your ERP automatically. Your customers will also be able to search for any historical invoices, reducing the need to call your Accounting or Service department for invoice-related questions or issues.

Data Accuracy

Since your customers will register for ExpressPay and access to their invoices, they will be able to keep their contact information accurate on their profile, lowering typos and data issues within your ERP.

Invoices

Status: Any | ID: ID | Min Date: mm/dd/yyyy | Max Date: mm/dd/yyyy

ID	Total	Date	Status	
80	\$3,909.05	2021 Apr 16 03:38 PM	Unpaid	⋮
79	\$4,857.73	2021 Apr 02 01:52 PM	Unpaid	⋮
78	\$2,320.83	2021 Mar 23 04:12 PM	Unpaid	⋮
77	\$2,333.96	2021 Mar 05 04:31 PM	Unpaid	⋮
76	\$9,596.24	2021 Feb 09 10:17 AM	Unpaid	⋮
75	\$1,377.46	2021 Feb 02 10:04 AM	Unpaid	⋮
74	\$1,377.46	2021 Feb 02 10:02 AM	Unpaid	⋮
73	\$411.17	2021 Feb 02 09:55 AM	Unpaid	⋮

1 2 3 4 5 ... 8 items per page 1 - 8 of 59 items

Payment Hub Pricing


Switching to PayTrace can save you hundreds, if not thousands of dollars every month. The Clarity Payment Hub has the ability to integrate with any ERP, CRM, EMR, etc. which all have their own way in which we have to integrate. This means that the time required to install, configure and potentially customize your integration can vary.

To schedule a demo or get an accurate estimate of what a payment Hub solution will cost, and how much it can potentially save your company each month, please give us a call today.



Get in Touch with Clarity

If you are a business, ready to move forward with credit card processing savings, please give us a call so we can help.

 +1 (800) 928 - 8160

 clarity-ventures.com



Jeremy Howell

Director Business Development

 jeremy.howell@claritymis.com



Philip Gano

Director of Sales

 philip.gano@claritymis.com