

CLARITY

# Clarity Connect Server Requirements



## Table of Contents

Connect Framework Server Recommendations.....	3
Summary.....	3
Clarity Connect Framework (Connect) .....	3
Overview of Hardware Recommendations .....	4
Estimates of current traffic.....	4
Scenario 1 – Internal Connect Hosting .....	5
High Level Recommendations for Production Server Hardware on Local Environment .....	5
Estimated Configuration / Setup Time .....	5
Scenario 2 –Azure Hosted .....	7
High Level Recommendations for Production Server Hardware – Cloud & Virtualized .....	7
Estimated Configuration / Setup Time .....	7
Connect Server Requirements.....	8
Connect 4.0+.....	8



## Connect Framework Server Recommendations

### Summary

This document will provide very high-level recommendations for Connect's hosting hardware requirements. Many of the recommended configurations and detailed technical specifications are dependent on the frequency and amount of expected traffic to the application. Additional information is also available during the project discovery process, during which a customized network diagram and security analysis can be generated.

### Clarity Connect Framework (Connect)

Connect serves to integrate data between business applications. Connect runs as a standalone application. Your individual ERPs can thus be hosted externally or in a DMZ for example while Connect can be hosted internally within a LAN or behind a separate firewall, if desired.

Most Clients will configure the Connect to run behind some level of increased physical security. Figure 1 & Figure 2 show examples of how Connect is typically configured. Many Clients will install Connect on a server that also runs other connector/integrations, etc. It's possible to implement Connect though on the same physical hardware instance(s) as your ERP (although this isn't recommended for security purposes).

With regards to hardware/networking resource allocation, typically the needs of the Connect are roughly 25% of the ERP. In general, a very minimal instance of Windows Server (following the recommendations here: [Connect Requirements](#)).

## Overview of Hardware Recommendations

Please see below for hardware recommendations noting that these recommendations are very high level with the traffic estimate data below as well as general experience with Connect driving the recommendations. This is by no means intended as a final set of recommendations but is intended to begin the discussions.

### Estimates of current traffic

- Current Analytics / User data for the site, need the following:
  - Total Visits / Logins and Unique Visits in the past 12 months
  - Peak month's (if there are 2-3 then let's review those)
  - Peak traffic per day
    - Peak time of day and traffic during that period (total and unique)
  - Location of traffic (%'s by location for 12 months and monthly data).
- Current Hardware usage needed:
  - Current hard drive space used for media or other files
  - CDN service(s)
  - Security auditing services
  - Specifications for current networking configuration

## Scenario 1 – Internal Connect Hosting

### High Level Recommendations for Production Server Hardware on Local Environment

\*NOTE – items with asterisks (\*) may have much lower HD space requirements based on actual usage.

#### *Connect Server(s) - [Internal Network]*

- Summary: Connect server (with the option to scale as needed).
- Hard drive: Raid 5/6, at least 20GB for DB and files\* & 50GB+ OS.
- CPU: Recommended 2 cores for VM or more.
- RAM: 4GB or more.

**Recommended Environment:** Windows Server 2016, SQL Server 2016, .NET Framework 5.0

#### Estimated Configuration / Setup Time

Infrastructure team: 2-4 hours  
Security team: 2-4 hours  
ERP team: 2-4 hours

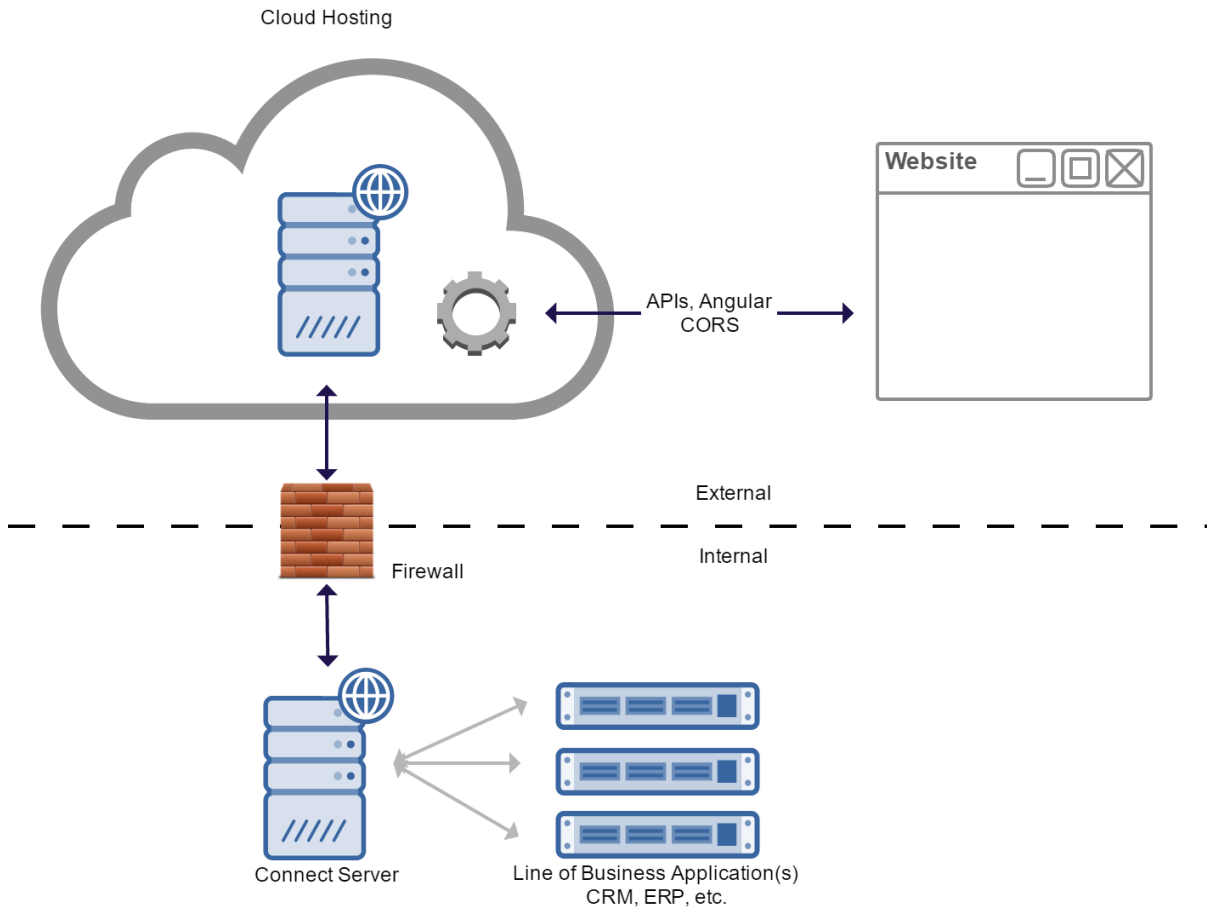


Figure 1 - Simple Configuration with external Application and Internal Connect

## Scenario 2 –Azure Hosted

### High Level Recommendations for Production Server Hardware – Cloud & Virtualized

\*NOTE – items with asterisks (\*) may have much lower HD space requirements based on actual usage.

#### *Single App Service with Failover/Load Balanced options - [Cloud Hosting]*

- Summary: App Service with SQL server database (service model).
- Hard Drive: Recommend SSD with at least 50GB for App Service.
- CPU: At least 2 virtual cores.
- RAM: At least 6GB.

### Estimated Configuration / Setup Time

Infrastructure team: 4-6 hours

Security team: 2-4 hours

ERP team: 2-4 hours

## Connect Server Requirements

In order to setup a Connect application you need to have the following requirements met:

### Connect 4.0+

#### Recommended Environment

Windows Server 2016+ // IIS 10+ // SQL Server 2016+ // .NET Framework 5.0

Ubuntu LTS 20.04+ // SQL Server 2016+ // .NET 5.0

#### Supported Operating Systems

Windows 7 (Local development)

Windows 8 (Local development)

Windows 10 (Local development)

Windows Server 2008 / 2008 R2

Windows Server 2012 / 2012 R2

Windows Server 2016+

#### Linux

[See Microsoft's official documentation on installing .NET on Linux](#) for more details

- Ubuntu (16.04 LTS/18.04 LTS/20.04 LTS+)
- Alpine Linux
- CentOS 7+
- Debian 9+
- Fedora 32+
- OpenSUSE 15+
- RHEL 7+
- SLES 12SP2+
- Any distribution satisfying the following requirements *should* work
  - OpenSSL (not LibreSSL)
  - glibc or musl
  - SystemD/OpenRC/some software to schedule Connect as a service
  - Supporting X11 or WayPipe forwarding for remote access
  - Supporting Visual Studio Code for remote debugging

### Supported Web Servers

Microsoft IIS 7.0, 7.5, 8.0, 8.5, 10.0+

Apache (the application is a .Net Core application and can run in an Apache web server.)

### Supported Database Servers

Microsoft SQL Server 2008 / 2008 Express

Microsoft SQL Server 2012 / 2012 Express

Microsoft SQL Server 2014 / 2014 Express

Microsoft SQL Server 2016 / 2016 Express

Microsoft SQL Server 2017+ / 2017+ Express

Microsoft SQL Server Azure

MySQL (the application is a .Net Core application and can run in an Apache web server.)

Self-contained (Connect hosting its own DB in-process; SQLite or LiteDB)

### Supported .NET Framework

NET 5.0+

Certain connectors (e.g Dynamics GP, Sage 50, etc) may additionally require .NET Framework (4.6/4.7/etc)